

CERTIFICATE OF LOCATION OF GOVERNMENT CORNER

EAST QUARTER Corner of Section 23, Township 106, Range 40, 5TH P.M.

STATE OF MINNESOTA, County of MURRAY

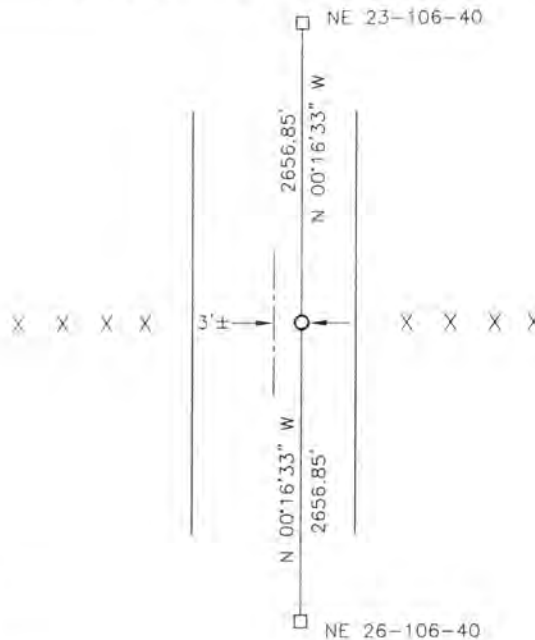
At the corner location shown on the sketch:

On _____ found a _____
DATE

left monument as found, lowered monument, removed monument (explain)

On 09-15-2017 placed a 5/8" IRON WITH SEAL #50343.
DATE

SKETCH OF REFERENCE TIES

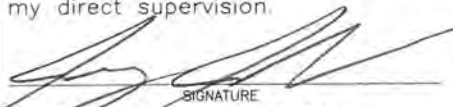


Minnesota State Plane Coordinate
System Murray County Datum
NAD83 (1996)

N: 144988.461
E: 543221.119

Statement of evidence relative to this corner location is on back of page.

I hereby certify that this document and the data contained herein was prepared by me or under my direct supervision.

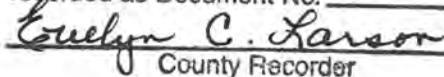

SIGNATURE
2/19/18
DATE

Registration No. 50343

- Land Surveyor, Professional Engineer
- County Surveyor, County Engineer

STATE OF MINNESOTA, }
COUNTY OF MURRAY, } ss.

I hereby certify that the within Instrument was filed in this office for record on the 26TH day of MARCH A.D. 20 18 at 9:00 o'clock A. M, and was duly recorded as Document No. _____


County Recorder

Statement of Evidence

In 1861, D.W. Wellman and S.S. Smoot did the original subdivision of the township.

On September 15, 2017, Bueltel-Moseng Land Surveying set a 5/8" iron with seal #50343 midway and on line between the section corners. It is in line with the fences to the east and west and 3'± east of the centerline of the road.